


Abandoned Farmhouse

BY WILLIAM HANLEY



The build was inspired by a video on YouTube Entitled “Abandoned Farmhouse” as part of a series named Boomer Diorama.



Materials for Construction

- ▶ Design Preservations Models:

- ▶ #20600 Humble Home

- ▶ Tichy Train Group:

- ▶ #8109 Round Spindle Porch Rail

- ▶ Evergreen:

- ▶ #101 0.010" x 0.030"

- ▶ #103 0.010" x 0.060"

- ▶ #104 0.010" x 0.080"

- ▶ #143 0.040" x 0.060"

- ▶ #211 0.040" Rod

- ▶ #224 1/8" Rod

- ▶ #261 0.060" Channel

- ▶ #8202 2"x 2" Scale Strip

- ▶ #8210 2" x 10" Scale Strip

- ▶ #9010 0.010" Plain Sheet Styrene

- ▶ #9040 0.040" Plain Sheet Styrene



STREET LIGHT, FIGURES, DETAILS AND LANDSCAPE NOT INCLUDED

Kit Contents: 7 Walls, 4 Roof Panels, 1 Front Porch Roof and Floor, 1 Back Porch Roof and Floor, 2 Porch Posts, 2 Back Porch Roof Brackets, 1 Chimney and Skirt, 1 Power Meter, 1 sheet Clear Window Material, 1 sheet Black Paper and Instructions



WOODLAND SCENICS®

Manufactured by

WOODLAND®

PO BOX 98, LINN CREEK, MO 65052

woodlandscenics.com

#20600

HUMBLE HOME

4 1/8 in W x 3 7/16 in D x 2 3/4 in H
(10.4 cm x 8.73 cm x 6.98 cm)

Combination
Package



Item #20600



MO



Basic Structure – 7 Walls and 4 Roof Pieces



2" x 10" Rafters



2" x 2" Trim Added to Rafters
Smoke Stack and 0.010" Flashing and Patches



0.040" Base With 0.010" x 0.080" Planking



Distressed Planking and 0.010" x 0.030" & 0.010" x 0.080"
Boarded Windows

Porch Roof Built – 4" x 4", 0.010" x 0.080", 0.010"
Sheet, DPM Porch Post, & Tichy Railing



Note - Split Gutter







Ready for Paint - Materials

Tamiya:

XF-7 Flat Red

XF-10 Flat Brown

XF-57 Buff

X-20A Thinner (You could use IPA)

Vallejo:

#71.040 Burnt Umber

#71.053 Dark Sea Gray

#71.057 Black

#71.080 Rust

#71.083 Orange

#71.083 Ferrari Red

#71.131 Concrete

#71.132 Aged White

#71.311 Ash Grey

First the Tamiya

Step 1 – Tamiya XF10 Flat Brown (Thinned) Under the Eaves



Step 2 – Tamya XF57 Buff
(Thinned) on Whole Body
Avoiding Under Eaves



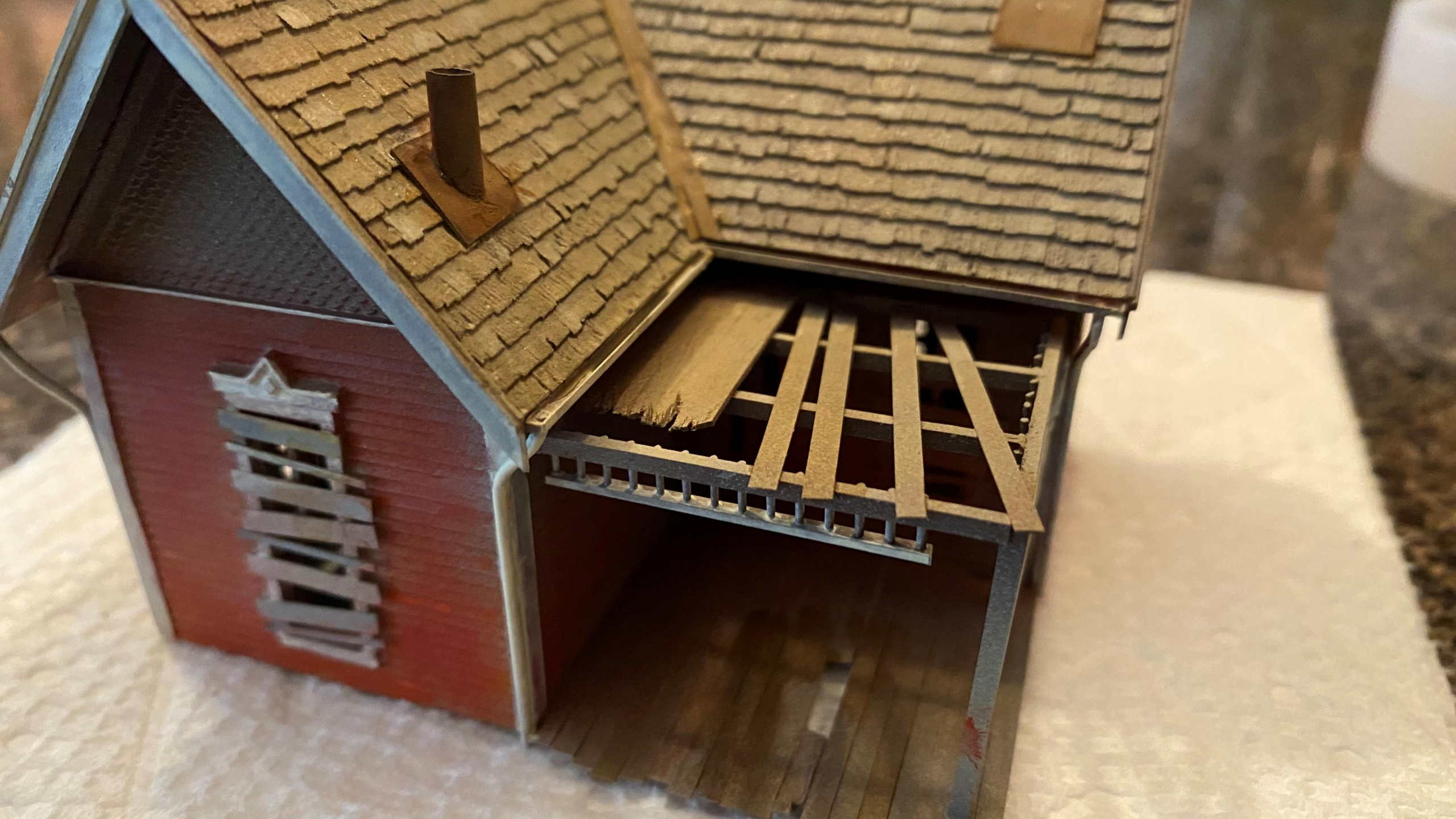
Step 3 – Tamiya XF7 Flat Red (Thinned) on Walls





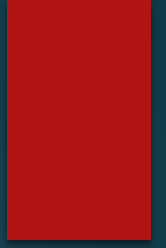
Now to the Vallejo







Lessons Learned





City Classics Company House



The End