

The

**Whistle**



**Post**

*Official Newsletter of the*

**Neuse River Valley Model Railroad Club**

**1615 Old Louisburg Rd Raleigh, NC 27604**

**Phone: 919-400-5570**

### **“All Aboard”**

Ho Ho Ho and Happy Holidays to one and all!

It's beginning to look like Holiday Mania has hit. I don't remember seeing so many houses with so many lights, blow ups, and stuff in past years. That should be good for Duke Power's stock!

Right here in the Club house, our elves, Ken Howard and George Sawyer, have really outdone themselves by overstocking the shelves with lots of great train bargains. Even if you are just shopping for yourself, there certainly must be something you can find. Thanks guys, it's great to see such variety of stuff.

One final very big thank you to each and every one who took time out of their lives and worked hard to make our Fall show the most successful and profitable ever. The best of 40! That's a great accomplishment. And now, it's on to bigger and better. We are already planning on improvements for the Spring show and are really looking forward to getting back in the Graham building for Fall. 41 will be spectacular!

One small reminder to anyone using the Big Boys on the HO layout — please do not remove them from the layout, and refrain from picking them up in any way. They are difficult to handle; connections and drive gear are easily damaged. Despite their mass and heft, they are delicate and require an experienced hand to prevent damage. Please. Handle with care.

How do you like our new exterior RR signage? I think it looks great and gives us a landmark when we are giving directions to the Club. Thanks to Mike Hinman for putting it up.

OK. Time for a quick Eggnog before I board the train!

See you on the Railroad - - All Aboard

**John Spach, President**

## Photo Shopping the HO Layout



**Jake Forbes** took his Neuse River Valley 2-6-2 up the mine branch (alias Main 4 Extension) and snagged some pictures. **Liam Bryant** did a Photoshop job that should spur Club members to pay greater attention to scenery.

## Brookdale Seniors' Visit – November 19<sup>th</sup>

We entertained 13 guests from Brookdale on November 19th. Refreshments were served after tours of all the layouts. A good time was had by all. We note that Barbara Tate will be retiring from Brookdale at the end of the year. We hope her successor will continue to bring the seniors to the Club. We wish Barbara a wonderful retirement. Club members who worked the event were John Wallis, Don McPherson, George Sawyer, and Greg Rehe.

## Amending the Constitution at November Membership Meeting

Following the third reading of the amendments to the Constitution, a vote was taken. The Senior members ratified the amended document by a vote of 21 for, 2 against, and one abstention. The final document is available in the library along with the earlier amendments to the Bylaws. Thanks to Alan Bradley, Ken Howard, and John Wallis for their efforts to modernize the Club's governing documents.

## Schedule Change for Breakfast Socials

Because Christmas and New Year's Day fall on Wednesday this season, the breakfast socials for those weeks will be rescheduled to Friday, December 27<sup>th</sup> and Friday, January 3<sup>rd</sup>. The Club will resume the normal Wednesday, 9:00 am schedule on January 8<sup>th</sup>.

### Amherst Train Show

January 25 & 26, 2025 - West Springfield, MA

By Randy Foulke

The Railroad Hobby Show sponsored by the Amherst Railway Society will occur January 25<sup>th</sup> and 26<sup>th</sup>, 2025 in West Springfield, Massachusetts. This is the largest model railroad hobby show in North America. The show occupies 350,000 square feet in the Eastern States Exposition Center with Saturday attendance of over 17,000 people. All of the manufacturers will attend, with many showing off their new releases for 2025. Up to 50 operating layouts may be present. Show hours will be 9:00 AM to 5:00 AM on Saturday and 10:00 AM to 4:00 on Sunday. Many vendors accept only cash, so bring plenty of money if you plan on major purchases.

At this time, 6 people have committed to travel by vehicle, and one by air. The plan for vehicular travel is to leave very early Friday morning, January 24<sup>th</sup> and leave West Springfield on Monday morning, January 27<sup>th</sup>. Schaeffer O'Neill plans to drive his own vehicle, and at least one full-size SUV will be rented. The cost for vehicular travel should be in the \$100 to \$150 range, including taxes, fees, and gas.

For air travel, Breeze Airways has a non-stop for \$102. American, Delta, and United have many one-stop flights in the \$150 to \$200 range, and Southwest has many one-stop flights in the \$140 to \$220 range. All flights go into Bradley International/Hartford, which is approximately 15 miles from the show and the hotel.

Cost for admission for 2 days is \$30. Cost for hotel is \$374 for 3 nights, which includes taxes and fees, for single occupancy. The hotel is a highly rated Quality Inn & Suites, located 2 miles from the show. (This is the cheapest rate in the area.) The hotel rate includes a hot breakfast.

If you plan to attend the train show, let me know by the Membership Meeting on December 19<sup>th</sup>.

**Please note that travel and attendance at the Amherst Train Show is not sanctioned or sponsored by the Neuse River Model Railroad Club.** This just a "bunch of us guys" planning on attending the largest model train show in North America.



## Collecting Monies for Charity

It has been customary for NRV to collect monies at the December and January Membership Meetings for donations to two charities in the Raleigh/Durham area. It has also been customary for the NRV to match the first \$500 of member contributions. Last year, NRV split the donations between the Durham Rescue Mission and the Helping Hand Mission of Raleigh.

At the January Membership Meeting, those in attendance will decide what charitable organizations will receive the donations. For those interested in giving, come prepared in December and January to open your wallets. Thanks in advance to all of you who participate.

## 40<sup>th</sup> Annual Fall Train Show

Well, the 40<sup>th</sup> Annual Fall Train Show is now history. It was a great success for all involved. As usual, here are additional photographs of the event submitted by members.

**Loading out at the Clubhouse** (photos by Tom Garren)



Daphne Garren and Ken Howard in storeroom.



Mike Keelean bringing O-gauge to the truck.



Rick Calfee, Don McPherson, and Chuck Larnerd.



Alan Servas and Eric Dyke loading out.



Note the banner (photo by Tom Garren).



Alec and Emily (photo by Tom Garren).

### **It's Really Over** (photos by Ken Howard)

You know the show is officially over when the last containers have left the Crew Lounge and been returned to the appropriate storage areas, not to reappear until the next show. There is still some work to be done (organization of the file cabinet drawers, sorting construction materials, and general clean out of worthless materials), but that will wait for a little while. Thanks to Ken Howard, John Kuchnia, and John Spach, for the final stashing and reorganization of the storage rooms.





The show and general Club storeroom.



The Board storeroom (photos by Ken Howard).



Courtesy of John Spach – Merry Christmas!

## Real Railroads

Here are some more of **Jerry Davis's** photos below from his September road trip to the West Coast. These photos were taken on Jerry's return trip. For his earlier set of photos go back to the November Whistle Post to see what you missed.



Westbound at old Route 66 (get your kicks) overpass at Crookton, AZ.



Eastbound and westbound meet.



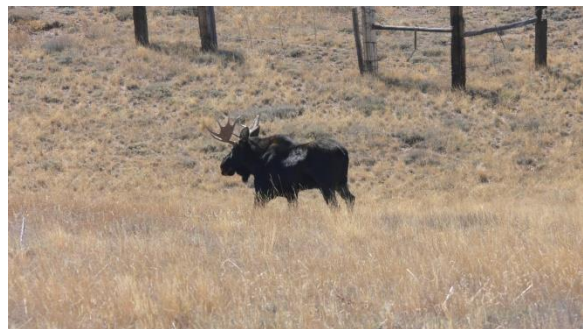
Eastbound and westbound meet.



The Ames Monument at Sherman Hill.



Pronghorns in Wyoming.



A local resident moose.

**Larry Pearlman** has also been traveling and sent in a variety of photos from his recent travels. Some of the photos appear below – additional pictures will be added to the January Whistle Post.





Silver Star at Lakeland, FL,



Woodstown Central in Woodstown, NJ.



SMS Baldwin S12 304, Mannington Mills, Salem, NJ.



NS 4670 on the former NS.

## The CSX Santa Train

By Ely Carter-Williamson

You may remember Santa's Reindeer, Dasher, Dancer, Prancer, Vixen, Comet, Cupid, and the most important one, Rudolph. But whenever he's going down the Clinchfield, he uses three flashy F40s, and this year, a very special Yellow-Nosed Reindeer painted in honor of the Clinchfield Railroad.



The Santa Train embarks on her final leg pass over the Holston River in Kingsport, TN.



On the outskirts of Dante, VA, the train is greeted by a convoy of chasers wanting to get a look at the lead Heritage Unit.





They call this a poetic reunion over the bridge that bears the historic Clinchfield Railroad name.



Jolly St. Nick greeting the children, parents, and railfans braving the cold weather at St. Paul, VA.

## Neat Links



**Eli Carter-Williamson's** note: The classic Union Baptist Church shot in Dante, VA. This year, the crowds and media attention were much larger compared to the last few years. The Bristol newspaper and a couple local stations, as was Railfan and Railroad and a couple related publications were there.

The most notable was ZDF, a German television station similar to the American PBS. As Hurricane Helene had torn through the area a couple of months prior, this year's Santa Train was well needed to spread some Christmas cheer to those affected by the storm. This photo was featured on Trains Magazine's Website for a news article about this Santa Train event.

<https://www.trains.com/trn/news-reviews/news-wire/news-photos-csx-santa-train-makes-annual-trip/>

**Tom Magnani** passed along the link below from **Fred Krauss**. Here is an exciting video taken at the Festival Of Trains in Traverse City, Michigan.

<https://nomirrc.wordpress.com/about/festival-of-trains/>

**Charles Tubman** passed along the following: "For those of you who were unable to make the November Membership Meeting, below please find a link to the November presentation, "Lynchpin" - the Long Road to the Opening of the Stockton & Darlington Railway" on our CSRRC YouTube.

<https://www.youtube.com/watch?v=w1ip4mjntoQ>

**Tom Magnani** passed along the following link from **Jack Dziadul**: "Minuteman Diesels Episode 4: The GP9s" on YouTube

<https://youtu.be/HxfrmC42Rg1s?si=eXT7FI4CzzAEFQA0>

## Upcoming Club Meetings and Activities

December N Scale Committee Meeting: The N Scale Committee will meet on December 14<sup>th</sup> at 10:00 am in the Clubhouse.

December General Membership Meeting: The next meeting will be held on Thursday, December 19<sup>th</sup> at 7:00 pm at the Clubhouse. Randy Foulke will present a program on Alco PAs. Attendance via Zoom is optional.

January Board of Governors Meeting: The next BoG meeting will be held at the Clubhouse on Monday, January 6<sup>th</sup> at 7:00 pm. Attendance via Zoom is optional.

Breakfast Social: Join us for the breakfast social at Barry's Café, Raleigh, NC during the Holiday Season. Because Christmas and New Year's Day fall on Wednesday this season, the breakfast socials for those weeks will be rescheduled to Friday, December 27<sup>th</sup> and January 3<sup>rd</sup>. The Club will resume the normal Wednesday, 9:00 am schedule on January 8<sup>th</sup>.

January HO Committee Meeting: Because of the Holiday Season the Committee will not meet in December. The next meeting will be on Sunday, January 19<sup>th</sup> at 1:00 pm in the Clubhouse.



## **Notes from the Editor and Webmaster**

Please send photos of Club activities to Brian Heaton, Webmaster, at [bheaton1@gmail.com](mailto:bheaton1@gmail.com), so he can maintain and update our website. Also, don't forget to send your material, especially videos, to Ted Kunstling at [tkunstling@aol.com](mailto:tkunstling@aol.com) so that he can keep our Facebook site current.

Please send articles, photos of real trains and Club activities, book reviews, product reviews, photographs of your home layouts, and interesting links to Ken Howard, Whistle Post Editor, at [klhowardjr@aol.com](mailto:klhowardjr@aol.com).

### **Minutes of Membership, Board, HO, and N Committee's Meetings**

Minutes of Board of Governors, Membership, and HO and N Committee meetings are available on the Club website. The link below takes you directly to the Minutes page:

<https://nrclub.net/meeting-minutes/>

NRV Whistle Post  
The Neuse River Valley Model Railroad Club, Inc.  
1615 Old Louisburg Road  
PO Box 19573  
Raleigh, NC 27619-9573

First Class

### BOARD OF GOVERNORS

John Spach	President	<a href="mailto:jtspach@earthlink.net">jtspach@earthlink.net</a>	919-361-3650
Ken Howard	Vice-President	<a href="mailto:klhowardjr@aol.com">klhowardjr@aol.com</a>	919-851-3805
Schaefer O'Neill	Treasurer	<a href="mailto:schaefer.oneill@gmail.com">schaefer.oneill@gmail.com</a>	919-740-6923
Tom Garren	Secretary	<a href="mailto:tomgar@mindspring.com">tomgar@mindspring.com</a>	919-805-0909
Richard Calfee (Calfee)	At-Large	<a href="mailto:rhcalfree@yahoo.com">rhcalfree@yahoo.com</a>	301-335-1054
George Sawyer	At-Large	<a href="mailto:gsawyer@ix.netcom.com">gsawyer@ix.netcom.com</a>	919-469-0442
Bob Witwer	At-Large	<a href="mailto:bobwitwer@gmail.com">bobwitwer@gmail.com</a>	919-632-0785

### OTHER KEY POSITIONS

Bob Witwer	Show Chairman	<a href="mailto:bobwitwer@gmail.com">bobwitwer@gmail.com</a>	919-632-0785
Clif Kelly	Membership Chair	<a href="mailto:bkelly11@nc.rr.com">bkelly11@nc.rr.com</a>	919-614-8891
Ted Kunstling	Social Media Chair	<a href="mailto:trkunstling@aol.com">trkunstling@aol.com</a>	919-787-5282
Wayne Aiken	Librarian	<a href="mailto:htomc42@hotmail.com">htomc42@hotmail.com</a>	919-602-8529
Ken Howard	Newsletter Editor	<a href="mailto:klhowardjr@aol.com">klhowardjr@aol.com</a>	919-851-3805
Brian Heaton	Webmaster	<a href="mailto:bheaton1@gmail.com">bheaton1@gmail.com</a>	765-427-6541

**WEB SITE** [www.nrvclub.net](http://www.nrvclub.net)