

The

Whistle



Post

Official Newsletter of the

Neuse River Valley Model Railroad Club

1615 Old Louisburg Rd Raleigh, NC 27604

Phone: 919-400-5570

“All Aboard”

“Fantastic, wonderful time, exceptional vendors, got lots of great stuff, really fun for the kids, sign me up for next year”.... These were just a few of the great comments I got at the show. It was a truly fabulous event, and we should all be proud of it. We owe a special vote of thanks to all those who devoted their time and efforts to make this happen.

Thank You! Thank You! Thank You!

Now let's move on, and run some trains.

We have had an increase in the number of members and friends who have been attending our Wednesday morning breakfasts at Barry's. Conversation and coffee are always great. Remember all are welcome. Be there at 8:30 am for first coffee, breakfast is ordered at 9 am, and we are off and running by about 10 am. Many go on to the Club to work and/or run trains. I look forward to seeing you all there.

Reminder to all Senior Members: this Thursday is the third and final reading of the proposed changes to the Constitution of the Club. The vote will follow the reading. Please make every effort to attend and vote.

If I don't see you at the Club, have a very happy Thanksgiving!

Trains are ready to roll - - All Aboard

John Spach, President

NMRA/MER Open House October 18, 2024

We had 13 guests during the MER convention visit on October 18th. Club members that worked the event were Rick Calfee, Dan Egy, Tom Garren, Ken Howard, Chuck Larnerd, Greg Rehe, and John Spach (photo by Tom Garren).



John Spach, Roy Masterson (President of the NMRA Southeast Region), and Brian Ford.

Amending the Constitution at Membership Meeting

All Senior members are reminded that the third reading of the amendments to the Club constitution will take place at the November membership meeting. Members should all have received an e-mail with the proposed documents attached in October. A vote to either accept or reject the proposed changes will take place immediately after the third reading. There will be no opportunity to make changes to the proposed document.

Only Senior members physically present at the meeting in the Clubhouse will be eligible to vote. 75% of those present must approve the amendments for them to become effective as long as a quorum of Senior members is present. If a quorum is not present, the amendments are automatically rejected, so please attend.

Raffle Layout Construction

A big thank you to the members who constructed the Raffle Layout: Liam Bryant, Thomas Charnley, Josh Crane (pending member), Jacob Forbes, Mike Keelean (cut the fascia for the side of the layout), Chuck Larnerd (mounted the fascia), Adam Servas, and Ely Carter-Williamson. As you can see from the photograph below, the Club has its best looking raffle prize in years. Good job guys!



(photos by Ken Howard)



Upcoming Brookdale Seniors' Visit – November 19th

Once again, the Club will host the folks from Brookdale's memory unit to view our layouts and to rekindle memories of their childhood trains and of relatives who worked the railroads. Please check in with John Wallis if you can help operate layouts and entertain our guests from 10 am to about 1 pm on Tuesday. John's email is wallisjohnm@gmail.com.

40th Annual Fall Train Show

Well, the 40th Annual Fall Train Show is now history. It was a great success for all involved. As usual, here are photographs of the event submitted by members.

Loading out at the Clubhouse (photos by Ken Howard)



Stacked boxes waiting for loading in the truck.



The final load that went to the show.



Bob Witwer, Don McPherson, and Richard Calfee.



Greg Rehe, Paul Lebedinski, Bob Witwer, Don Weaver, Mike Johns, Alan Servas, Mike Keelan, Daphne Garren and Don McPherson.

The Show Itself: (photos as credited)



Club Sales Table (photo by Ken Howard).



The Club Raffle Layout (photo by Ken Howard).

Lots of layouts, vendors, sponsors, and new additions to the show:



Show sponsor Scale Trains display (photo by Ely Carter-Williamson).



The HO truck layout was popular (photo by Ely Carter-Williamson).



Wilmington Railroad Museum layout detail (photo by Bob Witwer).



Rail Scale Models vendor table (photo by Bob Witwer).



East Carolina Railroaders S-scale layout (photo by Bob Witwer).



North Raleigh NTrak layout (photo by Bob Witwer).

The Show's over – time to go home: (photos by Ken Howard)



Loading out at the end of the show. Peter Donofrio, Jim Smith, Greg Rehe, and John Kuchnia.



The last load comes off the truck courtesy of Alan Servas, Wayne Aiken, Ted Kunstling, and Mike Johns.



Most of what made it back to the Clubhouse.



What didn't come home- lots of empties.

The Raffle Layout gets picked up (photos by Bob Witwer)



Winner Jaden Kick and his son.



Mike Hinman assists with the loading.

Upcoming Events

November 23, 2024: CSRRC Membership Meeting at the Southbound Sandwich Shop. Now that our friends at the Southbound are experimenting with Saturday hours, CSRRC will hold this meeting two days earlier at noon on Saturday, November 23rd, rather than on Monday, November 25th.

November 23-24, 2024: “Trainfest” at the Baird Center, Milwaukee, WI. Largest operating model railroad show in America.

October 5th Open House

by
Tom Garren

The Club held its Fall Open House on October 5th. Attendance was light, but very positive. We had thirty-two guests come to the Open House. We have two solid applications in the works. Overall, a successful event.

We had good support from 24 members for the event. Those participating were: Ed Bottum, Bernie Dawson, Rick Calfee, Ely Carter-Williamson, Dan Egy, Sam Ely, Randy Foulke, Tom Garren, Jimmy Hall, Brian Heaton, Mike Hinman, Mike Johns, Mike Keelean, Clif Kelly, Paul Lebedinski, George List, Schaefer O’Neill, Don McPherson, Larry Pearlman, John Spach, Elliot Susseles, Alec Urban, Don Weaver, and Bob Witwer. The pictures show Bob Witwer and Mike Johns with two different groups of guests.



(photos by Tom Garren)



Real Railroads

Jerry Davis contributed the photos below from his September road trip to the West Coast. The photos are sorted according to geographic location. This set of photos is from the trip west. Photos from Jerry's return trip will be included in the December Whistle Post.

North Platte, Nebraska



View from the Golden Spike Tower.



East side of the diesel shop.



Eastbound hump yard.



Locomotive ready track

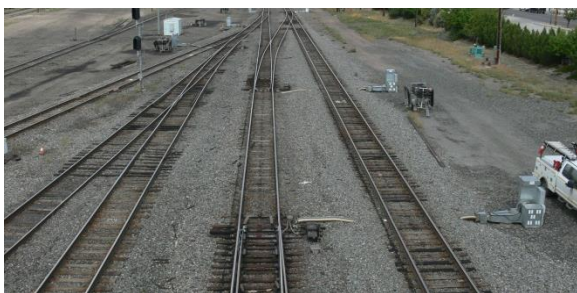
Green River, Wyoming



Green River Depot and outbound freight.



Locomotive service tracks.



Switch motors with conduit under tracks – just like NRV.



Close up of Green River Depot.

Wasatch Summit, Utah



Westbound freight heading for Echo Canyon.

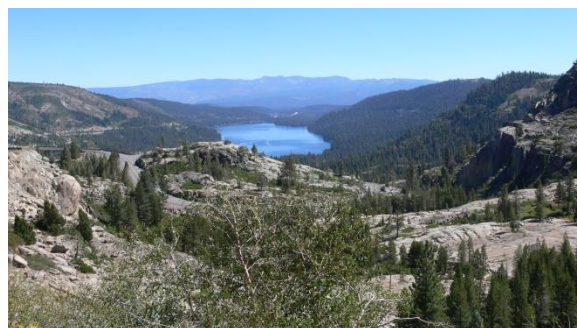


The TTS mobile at the water tank.

Donner Pass, California



Original 1866-67 snow sheds on abandoned line.
Current line goes beneath Mt. Judah through Tunnel 41.



View of Donner Lake looking east.

Cajon Pass, California



Westbound in Caliente Creek narrows.



Westbound at Rowen.



Eastbound on track 2 (left) and westbound on track 3 at
Cajon Station.



Westbound at Cajon Pass summit.

Neat Links

Scott Hall shared the following website from DJ'sTrains: "RAILROAD INDUSTRY ON A CURVE! Found one to model."

<https://youtu.be/rFNAevmVA3c?si=8yYdGqxOIS8rR9Jq>

Jerry Davis submitted the following photo, caption, and link:



Eastbound double stack at Soda Springs, a few miles west of Donner Summit. The train is slowing to get a signal to enter the "Big Hole", Tunnel 41. Here is a link to an article about the tunnels:

<https://www.atlasobscura.com/places/donner-pass-summit-tunnels>

Jerry Davis provided a link to a video that Mark McGowan shot while Jerry was with him on Tehachapi on Tuesday, September 17th. Great time!

[Railfanning With a Subscriber and Patron | Patreon](#)

Tom Magnani passed on the following from **Fred Krauss**:

Interesting older video on how the Marklin trains were assembled in the factory in Germany. Some of the narration is in German

<https://youtu.be/dPGkfQ4fPkw?si=gYkiPWAxcDU1V7tY>

From **Schaefer O'Neill**:

AWESOME!

https://www.youtube.com/watch?v=tPpWrjUCn_o

Upcoming Club Meetings and Activities

November General Membership Meeting: The next meeting will be held on Thursday, November 21st at 7:00 pm at the Clubhouse. Peter Donofrio will present a program on The Broadway Limited. Attendance via Zoom is optional.

NRV OPEN HOUSE for Brookdale Seniors will be held November 19, 2024 from 10:30 am to 1 pm at the Clubhouse. Please come and meet our visitors and run the layouts.

December Board of Governors Meeting: The next meeting will be at the Clubhouse on Monday, December 2nd at 7:00 pm. Attendance via Zoom is optional.

Breakfast Social: Join us for the breakfast social every Wednesday, 9:00 am at Barry's Café, Raleigh, NC.

Notes from the Editor and Webmaster

Please send photos of Club activities to Brian Heaton, Webmaster, at bheaton1@gmail.com, so he can maintain and update our website. Also, don't forget to send your material, especially videos, to Ted Kunstling at trkunstling@aol.com so that he can keep our Facebook site current.

Please send articles, photos of real trains and Club activities, book reviews, product reviews, photographs of your home layouts, and interesting links to Ken Howard, Whistle Post Editor, at klhowardjr@aol.com.

Minutes of Membership, Board, HO, and N Committee's Meetings

Minutes of Board of Governors, Membership, and HO and N Committee meetings are available on the Club website. The link below takes you directly to the Minutes page:

<https://nrvclub.net/meeting-minutes/>

NRV Whistle Post
The Neuse River Valley Model Railroad Club, Inc.
1615 Old Louisburg Road
PO Box 19573
Raleigh, NC 27619-9573

First Class

BOARD OF GOVERNORS

John Spach	President	jtspach@earthlink.net	919-361-3650
Ken Howard	Vice-President	klhowardjr@aol.com	919-851-3805
Schaefer O'Neill	Treasurer	schaefer.oneill@gmail.com	919-740-6923
Tom Garren	Secretary	tomgar@mindspring.com	919-805-0909
Richard Calfee (Calfee)	At-Large	rhcalfree@yahoo.com	301-335-1054
George Sawyer	At-Large	gsawyer@ix.netcom.com	919-469-0442
Bob Witwer	At-Large	bobwitwer@gmail.com	919-632-0785

OTHER KEY POSITIONS

Bob Witwer	Show Chairman	bobwitwer@gmail.com	919-632-0785
Clif Kelly	Membership Chair	bkelly11@nc.rr.com	919-614-8891
Ted Kunstling	Social Media Chair	trkunstling@aol.com	919-787-5282
Wayne Aiken	Librarian	htomc42@hotmail.com	919-602-8529
George Lasley	Historian	gwasley52@gmail.com	919-757-4503
Ken Howard	Newsletter Editor	klhowardjr@aol.com	919-851-3805
Brian Heaton	Webmaster	bheaton1@gmail.com	765-427-6541

WEB SITE www.nrvclub.net