

The

Whistle



Post

Official Newsletter of the

Neuse River Valley Model Railroad Club

1615 Old Louisburg Rd Raleigh, NC 27604

Phone: 919-400-5570

“All Aboard”

Happy New Year to everyone. May the New Year bring us peace and joy and the end of the Covid madness that we have endured for so long.

As you should all be aware, the Board has acted, in an abundance of caution, to close the club to outside people through January due to recent Covid increases. We have had Club members exposed and some have tested positive recently. So, as a member, you are still welcome to use the Club facilities, but you must always wear a mask, and please make sure you are vaccinated and boosted to the recommended dosages – to protect us all - - and keep us healthy.

As a result of member request, we are making a concentrated effort to restrict the business part of Club operations to the monthly Board Meetings, and spend more time during Membership meetings on members, programs, tutorials, and other social related things. Starting this month, we will add two new features to our monthly gathering: one will be educational; one will be fun. First, we will take a page from kindergarten and start a monthly “Show and Tell” feature. All members are encouraged to bring something to the meeting – railroad related – to share with the Club. It can be a new engine, a unique old piece, a new electronic gadget, or just a favorite piece. Bring something to show and be prepared to briefly tell us about it. The second, fun, item will be the “LUCKY 7” 50/50 drawing. We will sell tickets (\$1 each – 7 for \$5) during the meeting and at the end of the meeting will draw one lucky winner who will collect half of what was sold. The other half will go to the Club. So, we will have a bit of fun, and raise a few bucks for the Club. We need continued feedback on our progress, we need people to put on programs or at least suggest them, and we need people to share with us what they are doing on their own layouts. With your help, we will make our meetings more interesting and increase attendance and participation.

This month’s meeting will feature a video presentation provided by Ethan Quiram, entitled “It’s a big one - but it’s not a Big Boy.” Anyone with any interest in steam power, especially BIG steam power will not want to miss this program. Make sure you join us.

The HO layout committee is making terrific progress and is actively planning the new expansion and development. There will be updated reports and meeting notices from the committee as they progress. Sounds like they are on the right track.

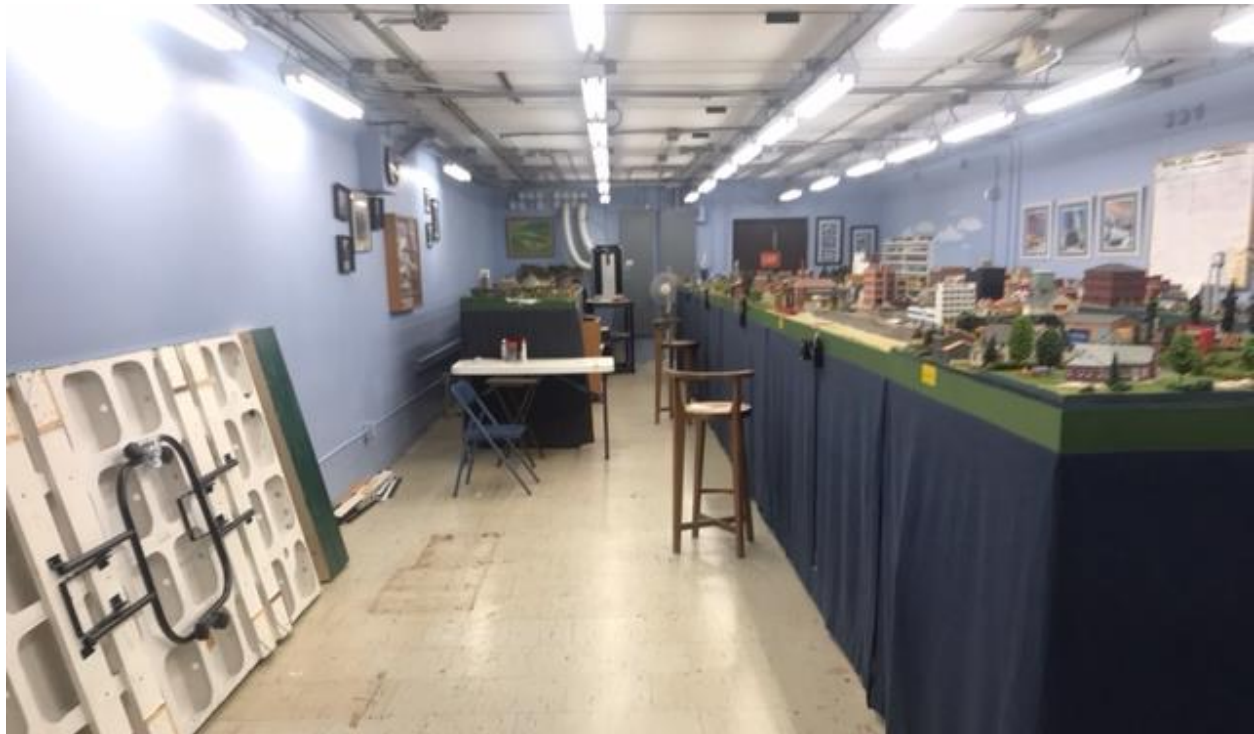
Just a reminder – Saturday February 19th is our next work/learn day at the Club. We plan on learning to install decoders in DC locos and to upgrade the Club fleet. We will also learn and work on couplers and wheel sets on Club rolling stock. AND - I will provide food for a lunch break. Don't miss it.

One last thing – if you know anyone interested in trains, bring them to the Club, introduce them to our group - - - let's build membership.

OK Train's leaving the station on track 1 - - - ALL ABOARD

John Spach, President

HO Layout Committee Activities



If you haven't been to the Clubhouse lately, you've missed out on some significant progress toward the goal of a major addition/modification to the HO layout. As you can see, the Lego layout has been removed – the last table is headed to temporary storage or repurposing – leaving room to move the N scale layout toward the entrance and permitting relocation of the air conditioner to a permanent wall mount.

In addition to the visually obvious changes in the layout room, the accumulations of STUFF that used to reside under the N and HO layouts have been purged or organized in storage compartments, preparatory to moving both layouts. Materials that will be useful in construction have been inventoried and stockpiled in the exterior storeroom.

A number of members have contributed ideas and potential track plans for the addition and more ideas are welcome. The committee will meet again on February 13th at 1 pm in the Clubhouse to 1) discuss options for the new construction, 2) start scheduling relocation operations, and 3) set time frames for needed maintenance on the HO layout. We hope to see you all there. Please send additional thoughts to Bob Witwer or other members of the HO committee (Richard Calfee, Mike Johns, and Ken Howard). Thanks to those of you who have already contributed!

Ken Howard

Club COVID-19 Mask Policy

Based on the surging omicron variant and breakthrough cases among Club members, the Board of Governors has elected to close the Clubhouse to the general public through the month of January. This closure will be periodically revisited as conditions warrant. In addition, Club events scheduled for January have been postponed into February.

The Clubhouse remains open to Club members, but we will continue to honor the City of Raleigh mask mandate. A mask or face covering is required while you are inside the Clubhouse regardless of your vaccination status. All members are expected to comply with the requirement and to remind other members of their responsibility. Thank you for your cooperation.

Open Houses and Interesting Layouts

Fred Kraus sent the following photos of the Michigan Central Railroad located in Metamora, Michigan. The riding railroad is owned by Bill Hays and is situated on a wooded 80 acre tract.



Neat Links

Ron Abraham and **Tom Magnani** helped provide the following links for S Gaugers:

www.nasg.org (National Association of S Gaugers)

www.acsg.org (Atlantic Coast S Gaugers)

Ron states that the Atlantic Coast S Gaugers attend our show and have lots of interesting links and show information.

Scott G. Hall provided the following YouTube video link from DJ's Trains showing Beaver County Model Railroad Club: "*AWESOME HO SCALE LAYOUT! Lighted! Detailed! Christmas Bonus!*" **Editor's note:** video runs about 8:28 minutes.

https://www.youtube.com/watch?v=8FOZeRTZw9o&ab_channel=djstrains

From **Fred Krauss** via **Tom Magnani**: Here's a 24:07 minute video covering the Colorado Model Railroad Museum, just up the road from Denver in Greeley, Colorado. It is relatively new (2009); started by the editor of the Greeley newspaper with money he received from selling the paper. The layout has extensive mountain scenery and 80 scale miles of track. The museum has its own new building next to the UP mainline. Well worth seeing - one of the finest MR layouts in the country.

<https://www.youtube.com/watch?v=OrldClqLB8>

Tom Magnani provided the following links about the Lehigh & Keystone Valley Model Railroad Museum in Bethlehem, Pennsylvania:

<https://www.youtube.com/watch?v=LRkygUYxRRo>

<https://www.lkvmodelrailroad.com>

Editor's note: Enjoy a video cab ride on the winding railroads modelled on the 1950 to 1976 time period. The 5,000 square foot, multilevel railroad depicts 1) the Lehigh Valley Railroad from West Portal to Bethlehem and north to Coxtown, 2) the Reading Railroad from Quakertown to Bethlehem and on to Harrisburg, and 3) the Central Railroad of New Jersey from Elizabethport to Wilkes-Barre. If you're not impressed you don't have a railroader's soul. Be sure to click on the SHOW MORE button for more information on the construction and historical importance of the layout. The video runs 40:03 minutes but is worth the time.

Here is a link to some flatcar load ideas passed along by **Tom Magnani** from **Jack Dziadul**:

main@RealSTMFC.groups.io | [Open flat vehicle loads](#)

Locomotive Review

C&O T1 from Broadway Limited Imports

by Tom Garren



I recently decided to add another engine to my small HO fleet. While looking over the selection at the Fall show, I found several suitable candidates. I settled on a used C&O T1 (2-10-4) from Broadway Limited Imports. The model seemed to have been run very little and came with the original box, documentation and extra parts as shipped from the factory. It is well detailed and painted. All in all, a very good representation of the C&O T1 class.

Once I got the locomotive home, I found that it ran well on my test track with DC power. I next took it to the Club and found that it ran fine on DCC, but the number was still set at 03. I got the help of Jerry Davis to reprogram the decoder to 3001 and considered the locomotive complete. I have now run it several times on the Club HO layout with no problems. The sound is clear, the engine runs well, and the lights work as they should. Because it is an older engine (2005), the QSI decoder lacks a few of the features found in new ones, such as back EMF speed regulation and automatic grade crossing signal, but it meets my needs for the foreseeable future.

Long way of saying; if you are looking for equipment, don't be afraid to explore the used market. With a little care and negotiation, you will find something to meet your needs for a fraction of the new price. Happy hunting!

Future Events

George Lasley passed on updated information on South Carolina train shows in 2022 from Todd Pletcher: The Myrtle Beach Club show is returning and Columbia, Summerville, Fort Mill, and Easley will continue a 2022 program. For additional information about show dates and vendor applications please visit the following website or contact Todd Pletcher, PO Box 277, Hartsville, SC 29551.

<http://www.southcarolinatradeshow.com>

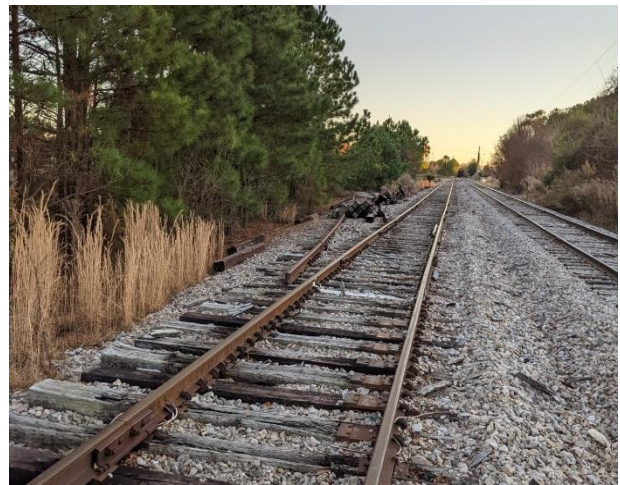
Railroad Slang Contest (courtesy of John Spach)

Test your train trivia knowledge with this 10 part challenge match up. Match the term with the appropriate definition. Answers can be found on Page 8.

- | | |
|------------------|--------------------------|
| 1. Brass Collar | a. Conductor |
| 2. Clinker Boy | b. Railroad tie |
| 3. Cushion Rider | c. Brakeman |
| 4. Doghouse | d. Dishwasher |
| 5. Hay Burner | e. Rare with striped end |
| 6. Mountain Pay | f. Railroad official |
| 7. Pearl Diver | g. Worn out Loco |
| 8. Roughneck | h. Caboose |
| 9. Skunk | i. Overtime |
| 10. Toothpick | j. Loco Fireman |

Real Train Photos

Tom Magnani submitted these photos taken at Apex Peakway where it crosses North Salem Street. Tom's description of the scenes follows: What caught my attention was that there had once been a siding and what was done was to remove the frog and the track from the frog to the points and to replace it with short sections of rail. The rail plates from the original turnout were left in place for reuse.



Fred Krauss provided photos of a Fairmont Tamper in Rosecommon, Michigan on the Lake State Railway. He suggests this could be a great modelling opportunity.



Upcoming Meetings and Activities

January Membership Meeting: The next meeting will be held Thursday, January 20th, 7:00 pm at the Clubhouse. Attendance via Zoom is optional.

February Board of Governors Meeting: The next meeting will be held Monday, February 7th, 7:00 pm at the Clubhouse. Attendance via Zoom is optional.

HO Layout Committee Meeting: Those interested in the planning process for the layout expansion are invited to the Clubhouse at 1 pm on February 13th to participate in deciding what the new addition should incorporate.

February 19th work/learn day at the Clubhouse: Come and learn how to add DCC to analog locomotives, mount couplers, and other fun maintenance items for Club equipment.

Breakfast Social: Every Wednesday, 9:00 am at Barry's Café, Raleigh, NC.

Dates are set for the **NRV SPRING INTO TRAINS**, 2022 edition. George Lasley has booked the Fairgrounds for April 30 – May 1, so mark your calendars. The date is a week earlier than usual to avoid the Mother's Day weekend.

Because of Covid outbreaks, the Clubhouse is temporarily closed to the general public. It remains open to members most Saturdays and Sundays from 10:00 am to 2:00 pm. If you don't have a key, check out our website at: <http://www.nrvclub.net> to see when the Club will be open and call 919-400-5570 to be sure that the doors are open.

Notes from the Editor and Webmaster

Please send recent photos of Club activities to Bernie Dawson, at nrvwebmaster@gmail.com, so he can maintain and update our website.

Thanks to all who are contributing items for the Whistle Post. Your participation is appreciated, and your contributions will appear as space permits. Please send articles, photos of real trains, book reviews, product reviews, photographs of your home layouts, and interesting links to Ken Howard, Whistle Post Editor, at klhowardjr@aol.com.

Answers to Railroad Slang Matching Game: 1- f, 2-j, 3-a, 4-h, 5-g, 6-i, 7-d, 8-c, 9-e, 10-b

How Did You Do?

Minutes of the Membership, Board, and Committee Meetings

Minutes of both Board of Governors and Membership meetings are now available to those who wish to read them on the Club website. Also, minutes from HO Committee meetings are now available, so members can follow the planning and construction of the new HO layout additions. The link below takes you directly to the Minutes page:

<https://nrvclub.net/meeting-minutes/>

NRV Whistle Post
The Neuse River Valley Model Railroad Club, Inc.
1615 Old Louisburg Road
PO Box 19573
Raleigh, NC 27619-9573

First Class

BOARD OF GOVERNORS

John Spach	President	jtspach@earthlink.net	937-215-2723
Wayne Aiken	Vice-President	htomc42@hotmail.com	919-602-8529
Michael Keelean	Treasurer	keeleanmike@gmail.com	919-886-9238
Tom Garren	Secretary	tomgar@mindspring.com	919-805-0909
Calfee (Richard Calfee)	At-Large	rhcalfee@yahoo.com	301-335-1054
Ken Howard	At-Large	klhowardjr@aol.com	919-851-3805
Bob Witwer	At-Large	bobwitwer@gmail.com	919-632-0785

OTHER KEY POSITIONS

George Lasley	Show Grand Poobah	glasley@bellsouth.net	919-757-4503
Calfee (Richard Calfee)	Membership Chair	rhcalfee@yahoo.com	301-335-1054
Ted Kunstling	Social Media Chair	trkunstling@aol.com	919-787-5282
Tom Garren	Librarian	tomgar@mindspring.com	919-805-0909
George Lasley	Historian	glasley@bellsouth.net	919-757-4503
Ken Howard	Newsletter Editor	klhowardjr@aol.com	919-851-3805

WEB SITE www.nrvclub.net

Bernie Dawson	Webmaster	nrvwebmaster@gmail.com	919-275-2144
---------------	-----------	--	--------------